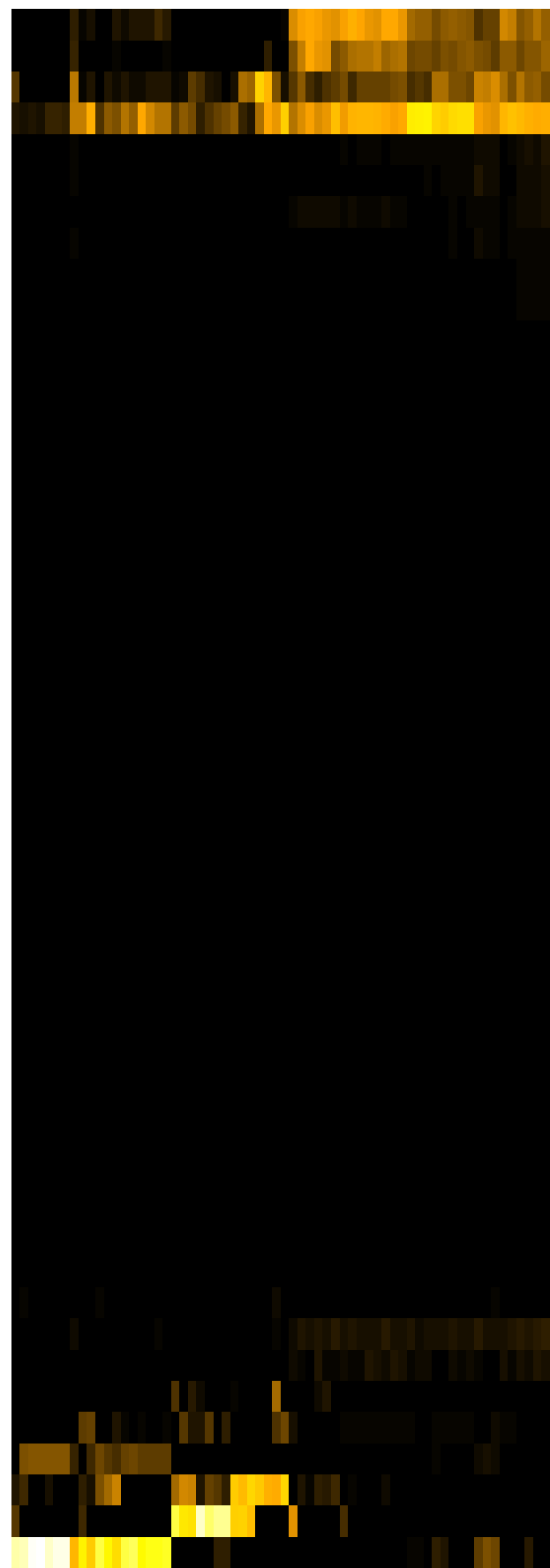
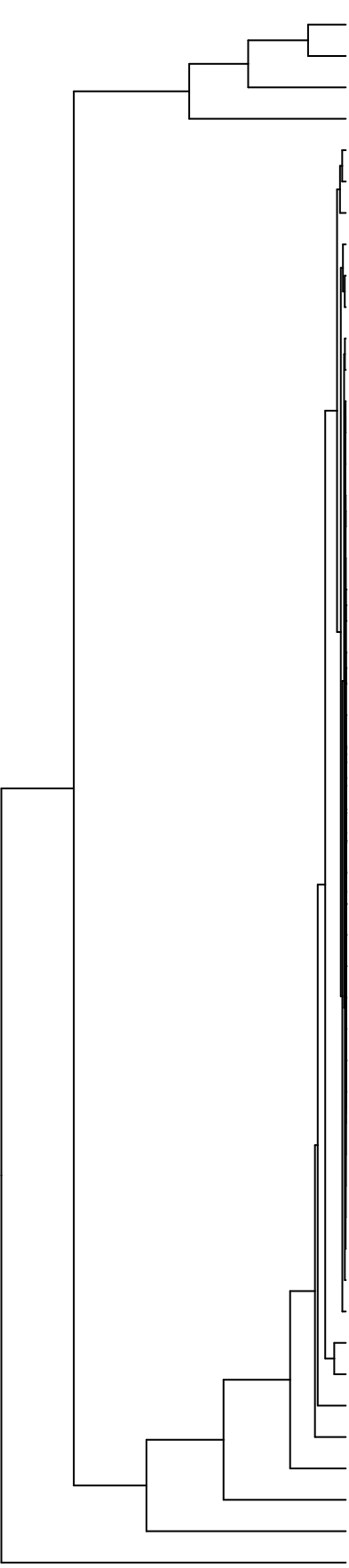


Group006  
 B Final -PMA  
 C Final -PMA



Veillonella  
 Haemophilus  
 Neisseria  
 Streptococcus  
 Eikenella  
 Aggregatibacter  
 Schaalia  
 Gemella  
 Campylobacter  
 Porphyromonas  
 Leptotrichia  
 Prevotella  
 Solobacterium  
 Stomatobaculum  
 Alloprevotella  
 Saccharibacteria\_(TM7)\_[G-1]  
 Lancefieldella  
 Saccharibacteria\_(TM7)\_[G-6]  
 Pseudomonas  
 Capnocytophaga  
 Serratia  
 Acidovorax  
 Agrobacterium  
 Lachnospiraceae\_[G-2]  
 Delftia  
 Novosphingobium  
 Leifsonia  
 Sphingobium  
 Riimerella  
 Microbacterium  
 Siccationidurans  
 Saccharibacteria\_(TM7)\_[G-5]  
 Phyllobacterium  
 Acinetobacter  
 Absconditabacteria\_(SR1)\_[G-1]  
 Cutibacterium  
 Oribacterium  
 Catonella  
 Lachnoanaerobaculum  
 Lautropia  
 Actinomyces  
 Staphylococcus  
 Granulicatella  
 Fusobacterium  
 Raoultella  
 Rothia  
 Salmonella  
 Klebsiella  
 Enterobacter  
 Citrobacter

F28914.S566  
 F28914.S402  
 F28914.S406  
 F28914.S403  
 F28914.S574  
 F28914.S407  
 F28914.S413  
 F28914.S410  
 F28914.S411  
 F28914.S409  
 F28914.S572  
 F28914.S569  
 F28914.S565  
 F28914.S562  
 F28914.S563  
 F28914.S567  
 F28914.S575  
 F28914.S241  
 F28914.S244  
 F28914.S247  
 F28914.S248  
 F28914.S255  
 F28914.S246  
 F28914.S250  
 F28914.S096  
 F28914.S091  
 F28914.S092  
 F28914.S090  
 F28914.S085  
 F28914.S256  
 F28914.S087  
 F28914.S086

Genus

Samples